



# One Earth Solar Farm

**Volume 6.0 Environmental Statement [EN010159]**

**Volume 3**

**Figure 10.1: Designated Heritage Asset Mapping in 1km and 2km Radius of the Order Limits**

**Figure 10.2: Non-Designated Heritage Asset Mapping in 1km and 2 km Radius of the Order Limits**

**Figure 10.3: Designated Heritage Asset ZTV Mapping with 1km and 2km Radius**

**Figure 10.4: Non-Designated Heritage Asset ZTV Mapping with 1km and 2km Radius**

**Figure 10.5: Topographically illustrated OS Map with Order Limits Outline, and 1km and 2km Radius**

**Figure 10.6: Illustrative masterplan with contour lines**

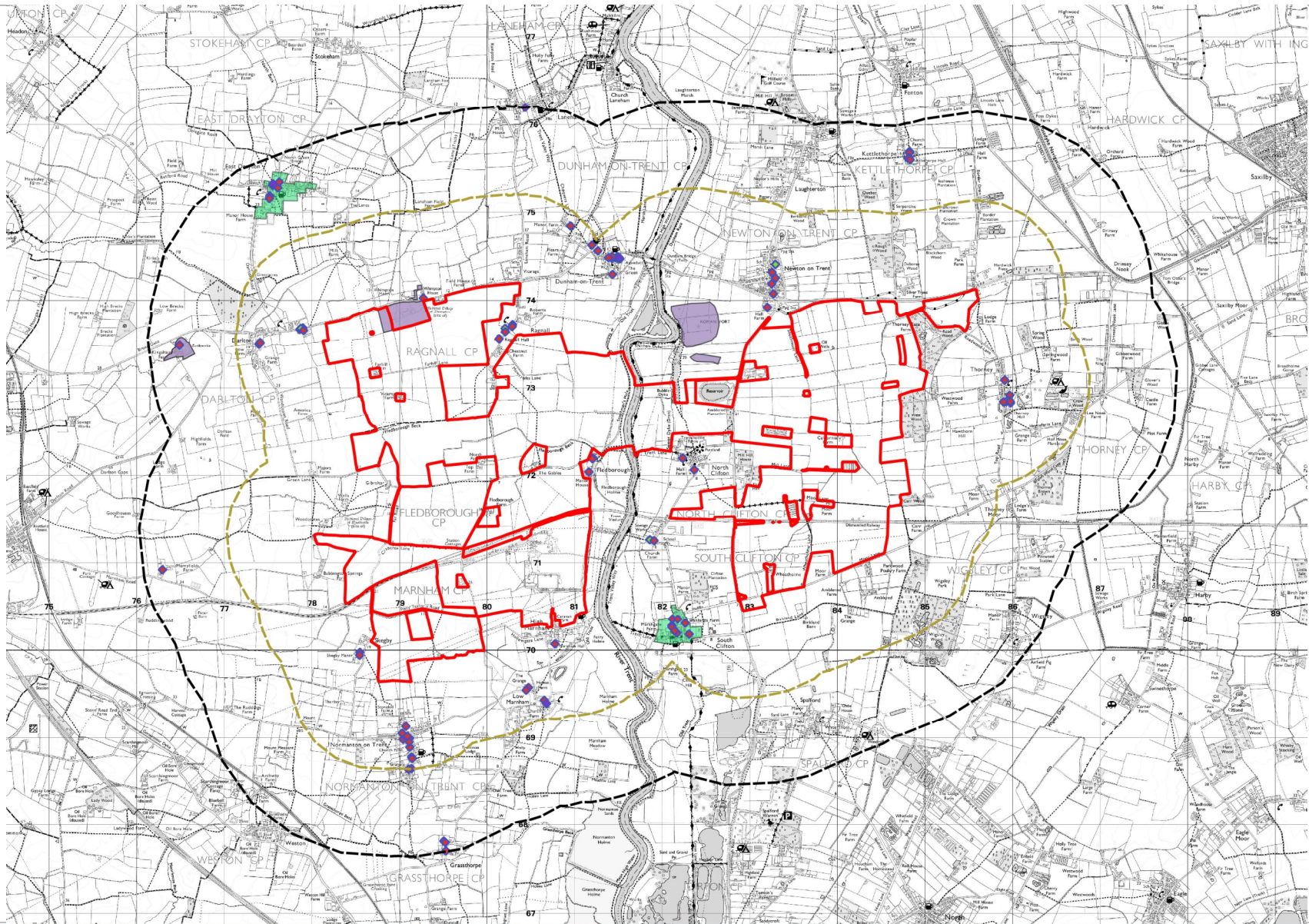
**Figure 10.7: View from Royal Observer Corps Hatch, Roman Fort Scheduled Monument (requested by Historic England).**

**February 2025**

Document Reference: EN010159/APP/6.20

Revision 01

Infrastructure Planning (Applications: Prescribed Forms and Procedure) Regulations 2009  
- Reg 5 (2) (a)



Client:  
One Earth Solar Farm Ltd

Project:  
One Earth Solar Farm

Planning Inspectorate Scheme Ref:EN010159  
Environmental Statement Volume 2

Drawing Title:  
Figure 10.1 Designated Heritage  
Assets in 1km and 2km Radius of the  
Order Limits

Drawing Number:  
EN010159/APP/6.20/10.1

Drawn Date:  
2024-09-03

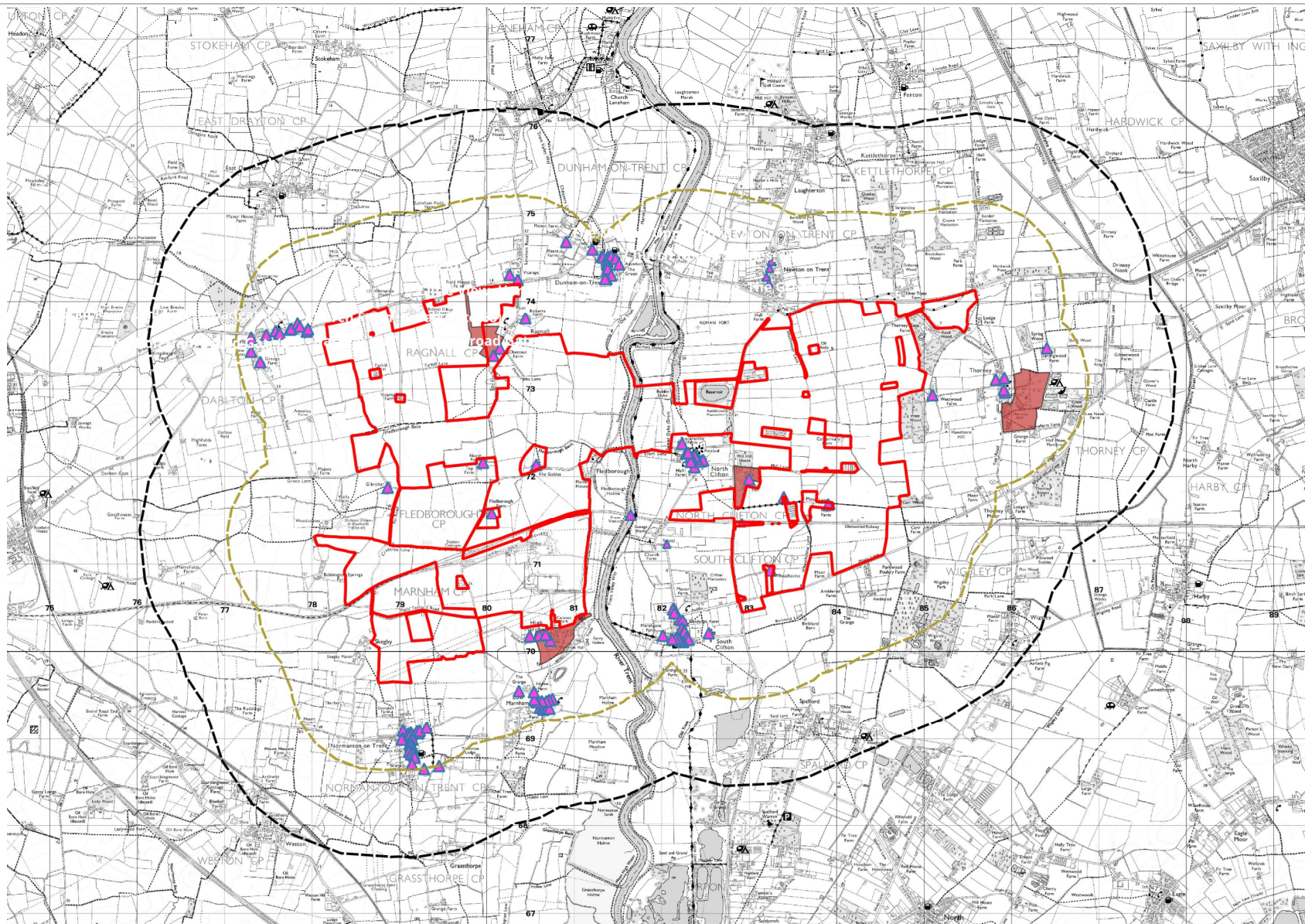
Rev:  
01

Legend:

- Order Limits
- 2km radius
- 1km radius
- Conservation areas
- Scheduled monuments
- ◆ Grade I
- ◆ Grade II
- ▲ Grade II\*
- Unregistered Park & Garden
- ▲ Non-designated heritage asset







Client:  
One Earth Solar Farm Ltd

Project:  
One Earth Solar Farm

Planning Inspectorate Scheme Ref:EN010159  
Environmental Statement Volume 2

Drawing Title:  
Figure 10.2 Non-Designated Heritage Assets in 1km and 2km Radius of the Order Limits

Drawing Number:  
EN010159/APP/6.20/10.2

Drawn Date:  
2024-09-03

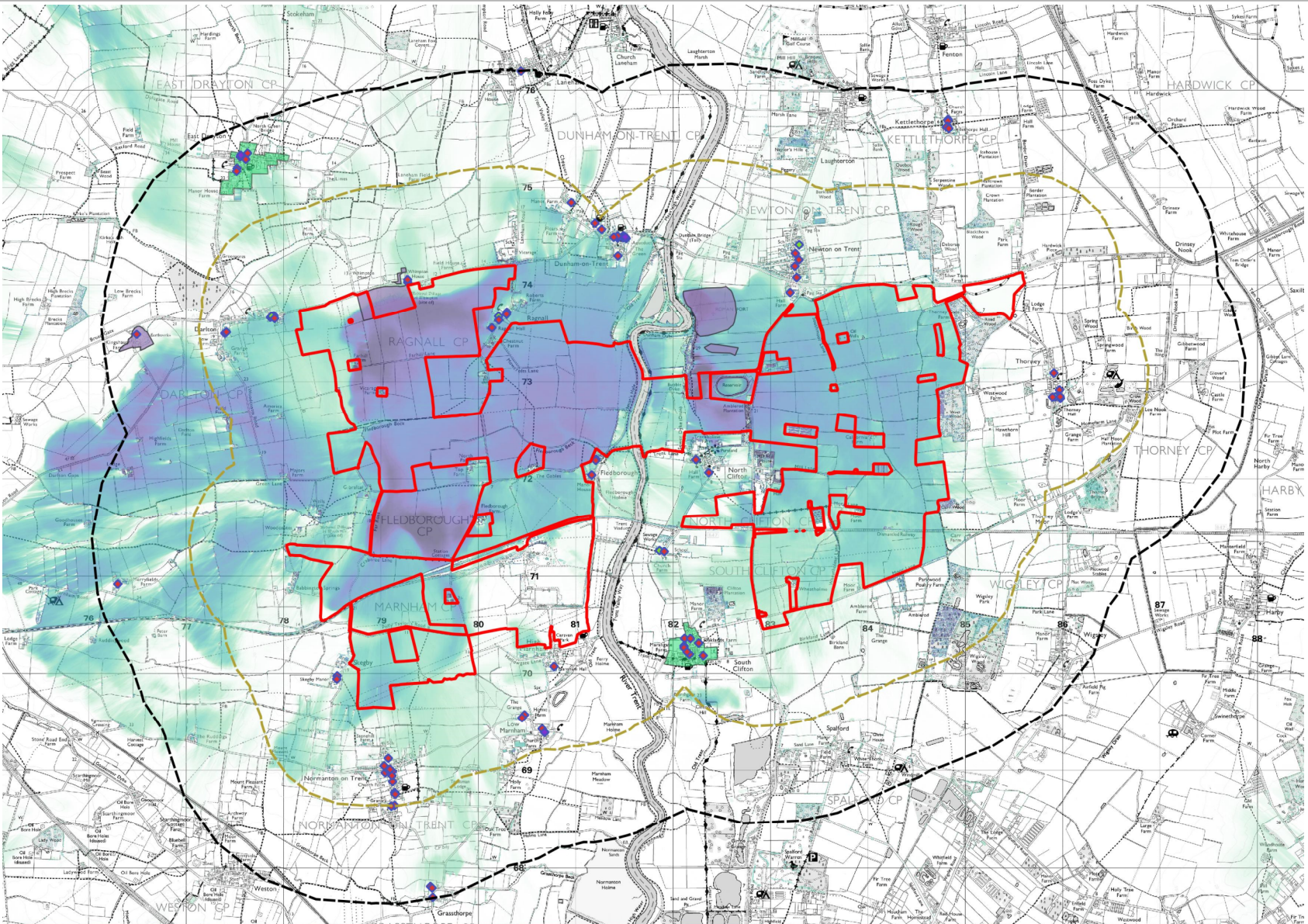
Rev:  
01

Legend:

- Order Limits
- 2km radius
- 1km radius
- Conservation areas
- Unregistered Park & Garden
- Scheduled monuments
- ◆ Grade I
- ◆ Grade II
- ◆ Grade II\*
- ▲ Non-designated heritage asset







Client:  
One Earth Solar Farm Ltd

Project:  
One Earth Solar Farm

Planning Inspectorate Scheme Ref:EN010159  
Environmental Statement Volume 2

Drawing Title:  
Figure 10.3 Designated Heritage Asset ZTV Mapping with 1km and 2km Radius

Drawing Number:  
EN010159/APP/6.20/10.3

Rev:  
01

Drawn Date:  
2024-09-03

Legend:

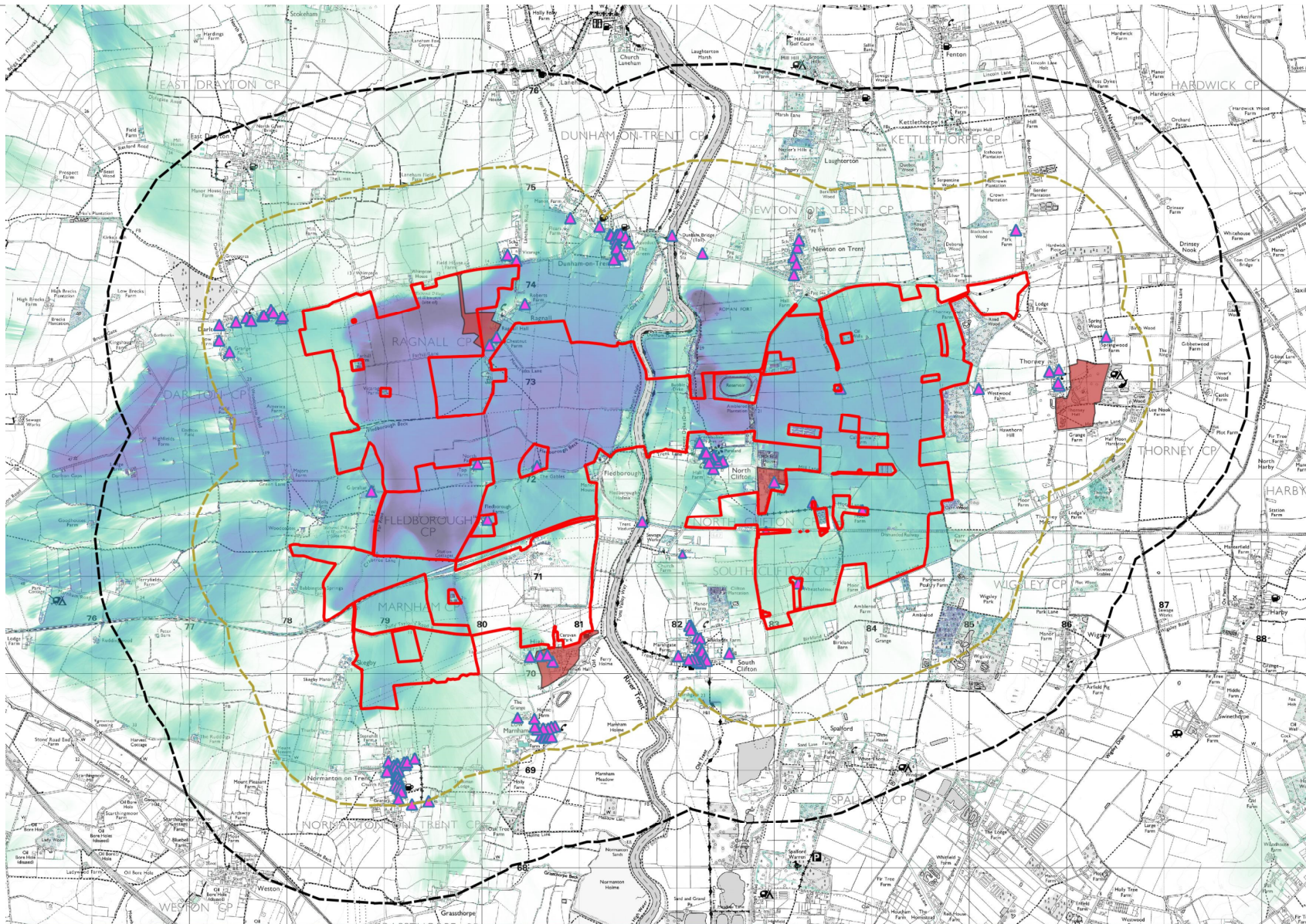
- Order Limits
- 2km radius
- 1km radius
- Conservation areas
- Scheduled monuments
- Grade I
- Grade II
- Grade II\*

**Zone of Theoretical Visibility**

High theoretical visibility

Low theoretical visibility





Client:  
One Earth Solar Farm Ltd

Project:  
One Earth Solar Farm

Planning Inspectorate Scheme Ref: EN010159  
Environmental Statement Volume 2

Drawing Title:  
Figure 10.4 Non-Designated Heritage  
Assets ZTV Mapping with 1km and  
2km Radius

Drawing Number:  
EN010159/APP/6.20/10.4

Drawn Date:  
2024-09-03

Rev:  
01

Legend:

- Order Limits
- 2km radius
- 1km radius
- Unregistered Park & Garden
- ▲ Non-designated heritage asset

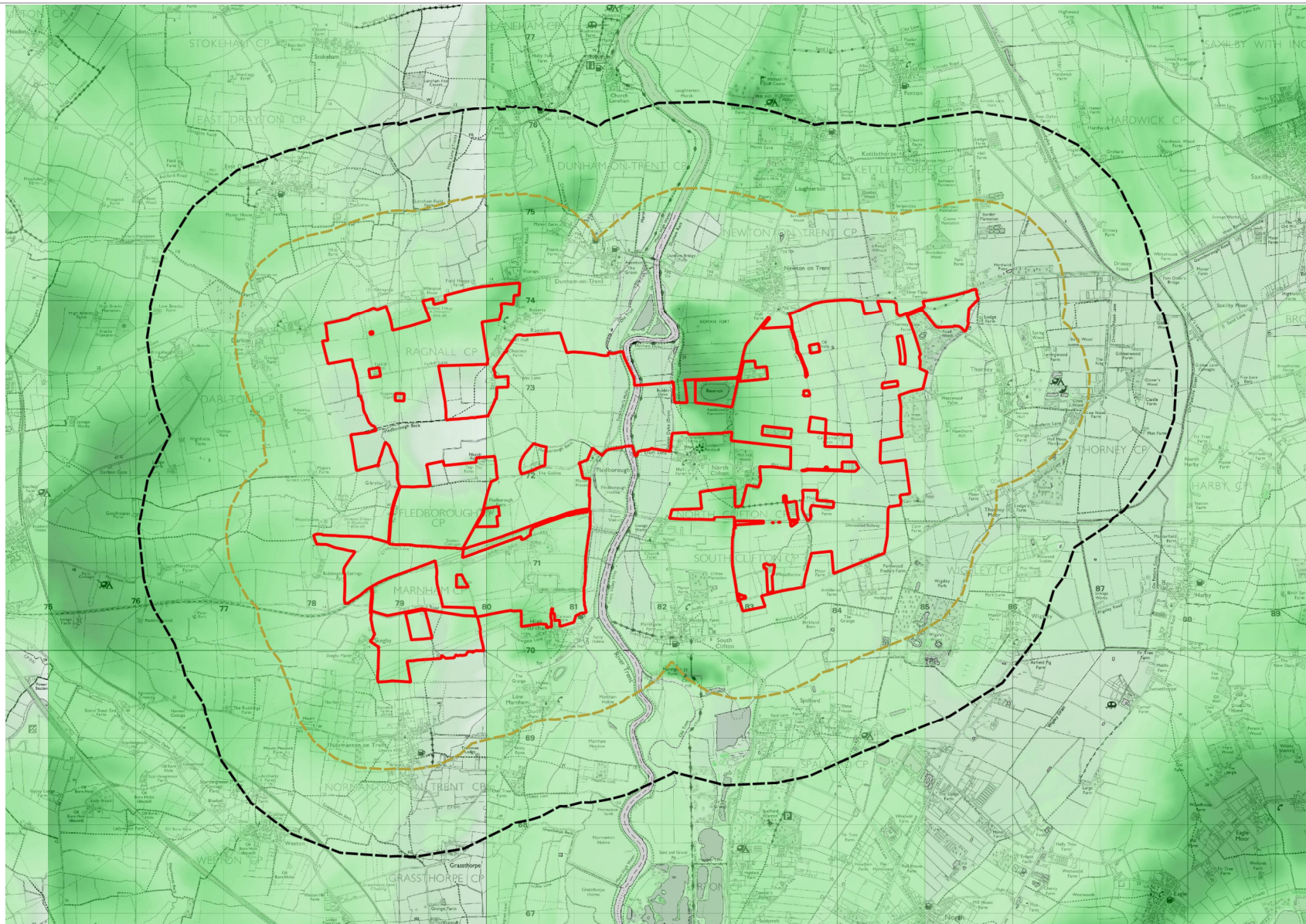
**Zone of Theoretical Visibility**

High theoretical visibility

Low theoretical visibility







Client:  
One Earth Solar Farm Ltd

Project:  
One Earth Solar Farm

Planning Inspectorate Scheme Ref:EN010159  
Environmental Statement Volume 2

Drawing Title:  
Figure 10.5 Topographically  
Illustrated OS Map with Order Limits  
Outline, and 1km and 2km Radius

Drawing Number:  
EN010159/APP/6.20/10.5

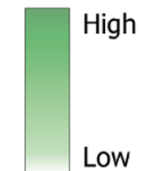
Drawn Date:  
2024-09-03

Rev:  
01

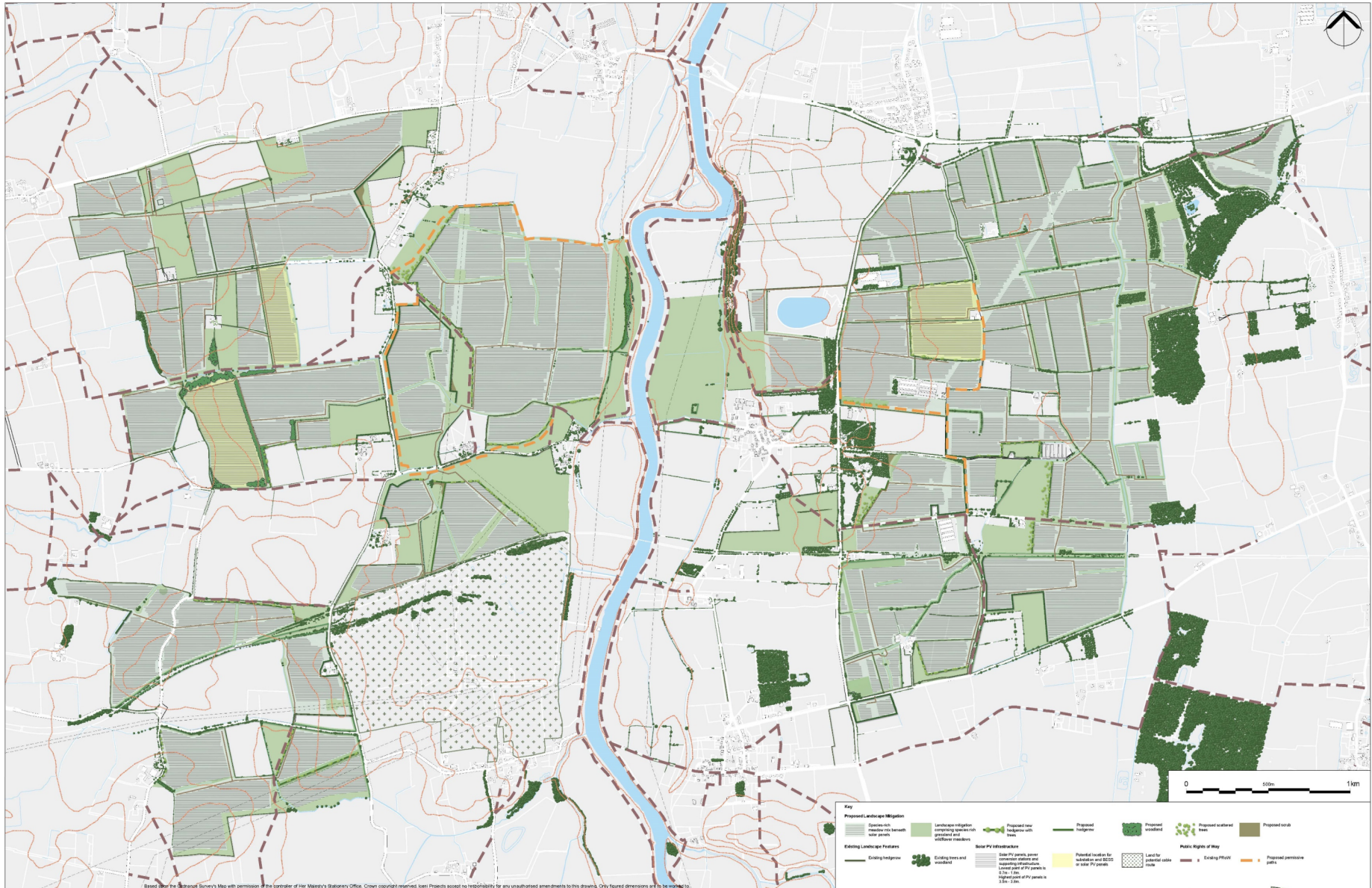
Legend:

- Order Limits
- 2km radius
- 1km radius

**Topography**







Client:

One Earth Solar Farm Ltd

Project:

One Earth Solar Farm

Planning Inspectorate Scheme Ref:EN010159

Environmental Statement Volume 2

Drawing Title:

Figure 10.6 Illustrative  
Masterplan with Contour Lines

Drawing Number:

EN010159/APP/6.20/10.6

Drawn Date:

2024-09-03

Rev:

01

Legend:





	Client:	Drawing Title:		<div>Legend:</div> <div></div>
	One Earth Solar Farm Ltd	Figure 10.7: View from Royal Observer Corps Hatch, Roman Fort Scheduled Monument		
	Project:	Drawing Number:	Rev:	
	One Earth Solar Farm	EN010159/APP/6.20/10.7	01	
Planning Inspectorate Scheme Ref:EN010159	Drawn Date:			
Environmental Statement Volume 2	2024-09-03			